

Three Phase Led Indicator Din Mounting



- Single & Three Phase Indicator lamps are designed to display a clear indication on the status of a circuit, an associated device or for phase monitoring. These are long lasting Indicator lamps designed for saving space & power in various applications.

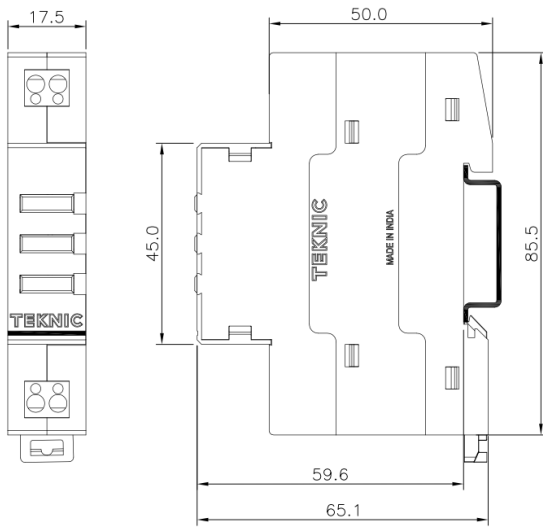
Ordering Code:

Cat. No.	Description
T6 230AWL	1 Phase LED Indicator Single WHITE
T6 230AGL	1 Phase LED Indicator Single GREEN
T6 230ARL	1 Phase LED Indicator Single RED
T6 230AAL	1 Phase LED Indicator Single AMBER
T6 230ABL	1 Phase LED Indicator Single BLUE
T6 230ACL	1 Phase LED Indicator Single CLEAR
T6 230AYL	1 Phase LED Indicator Single YELLOW
T6 230ARGL	2 Phase LED Indicator RED GREEN
T6 230ARYL	2 Phase LED Indicator RED YELLOW
T6 230AYGL	2 Phase LED Indicator YELLOW GREEN
T6 230ARYBL	3 Phase LED Indicator RED YELLOW BLUE
T6 230ARYGL	3 Phase LED Indicator RED YELLOW GREEN

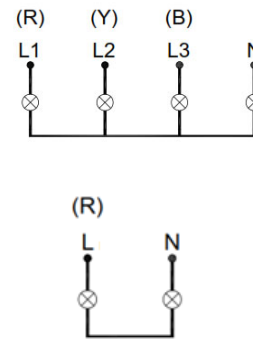
Applications:

- Applicable for use in electrical control panels, PLC panels, temporary DBs and solar ACDB applications.
- Other applications include a wide range of mimic panels, switch boards, testing & instrumentation panels, plug socket distribution panels, load line panels & meter boxes.
- Easy to detect phase availability in areas with frequent power fluctuations and disruptions.

Dimensional Drawing & Wiring Diagram (mm):




WIRING DIAGRAM



Salient Features:

- Compact, Robust & Aesthetically Elegant Design
- Quick installation
- Reliable & safe operation
- Available for Single, Two and Three Phase indication combinations
- LED technology for longer life
- Suitable for DIN rail 35x7.5 EN60715 on panel

General Specification:

Item Type	: 3 Phase LED Indicator DIN Mounting
Standard Voltage	: 230 VAC Voltages available on request: 24VAC/DC, 48VAC/DC, 110VAC/DC & 220VDC
Brand	: TEKNIC
Colour	: White
Suitable Location	: Mount in a dry area/location for best results.
Application Area	: Suitable for both indoor installations
Usage	: To be fitted on the DIN rail. Input and Output wiring to be connected.
Warranty	: 12 months from the date of supply against any manufacturing defects
Recommendation	: To be installed by qualified/licensed electrical personnel/contractor
Applicable Standards	: IEC/EN 60947-5-1
Product Certification	: 
Country Of Origin	: INDIA

Electrical Specification:

Voltage Rating	: 230 VAC, Single & Three Phase
Frequency	: 50 Hz
Description	: Single & Three phase DIN mounted RYB Lamps
Number of LEDs	: 2 nos Non-Replaceable LEDs per colour
LED Colours	: WHITE, GREEN, RED, AMBER, BLUE, CLEAR, YELLOW, RY, RG, YG, RYB & RYG
Polymeric Parts	: UL-Recognized material

Electrical Specification of Contact:

Rated Insulation Voltage	: 500 VAC
Rated Thermal Current	: 10 A
Dielectric Test	: 2.5 KV
Short Circuit Protection	: 10A HRC cartridge fuse, rated for resistive loading at 1000A prospective Current, as per IEC 60947-5-1

Mechanical Specification:

Protection Class	: IP20 for Terminals IP30 for Enclosure IP40 for front side
Degree Of Pollution	: 3
Operating Temperature	: -25 ° C to +70 ° C
Storage Temperature	: -25 ° C to +40 ° C
Terminal Capacity	: Maximum 2x1.5mm ² or 1x2.5mm ² : Minimum 1x0.5mm ²
Terminal Marking	: Markings provided on wiring terminal L1/L2/L3/N
Contact Material	: Electrolytic Copper (ECu); Tin Plated; : Chrome nickel spring steel (CrNi)
Terminal Torque	: 0.5 Nm Screw head compatible with posidrive or Philips screw driver
Mechanical Life	: over 50000 hours
Length	: 85.5 mm
Breadth	: 17.5 mm
Depth	: 65.1 mm